

Wheel loaders



**WACKER
NEUSON**

all it takes!



**ASK ABOUT
THE BEST
HEAVY INDUSTRY
WARRANTY
5 YEARS**

**WACKER
NEUSON**
all it takes!

The benefits of wheel loaders from Wacker Neuson.

1. Full power – precisely for your requirements.

Optimum balanced efficiency designed into every wheel loader from Wacker Neuson. As a result, you always get the power that you need in all models - combined with maximum efficiency.

2. Full flexibility – in all applications.

The Wacker Neuson Wheel Loaders have a broad range of different attachments suitable for every new job site: from the traditional digging bucket to the pallet fork to the numerous special attachments for the construction industry, recycling, municipalities and gardening and landscaping. As a result, you can tailor exactly the machine requirements that you need.

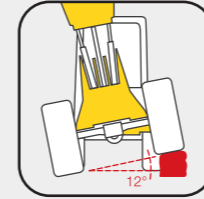
3. Full economic efficiency in every respect.

High quality materials for a long service life. Economical in consumption. Great maneuverability for quick loading cycles. Maintenance that is done in no time. We at Wacker Neuson always consider economic efficiency as an overall concept.

Wacker Neuson – all it takes!

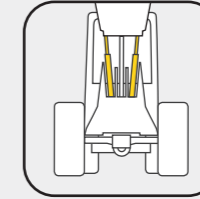
We offer products and services that meet your high requirements and diverse applications. Wacker Neuson stands for reliability. This of course also applies to our large range of wheel loaders. We do our best every day to ensure your success. And we do this full of passion for our jobs.

Wheel loader expertise down to the last detail.



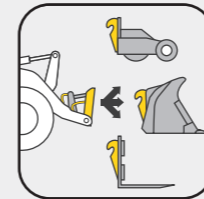
Maximum traction

Thanks to the articulated pendulum joint with 12° oscillating angle, all four wheels retain wheel grip, especially on uneven ground conditions whilst the operator maintains optimal control.



Two powerful lift cylinders

For even more stability of the loader system, all wheel loaders from Wacker Neuson are equipped with two lift cylinders. As a result, the hydraulic power is optimally distributed to the load arm.



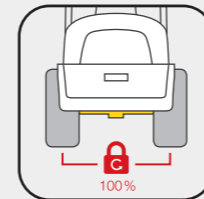
Your wheel loader as an attachment carrier

Use the wheel loaders from Wacker Neuson as you need them – the matching hydraulic performance and control circuits for additional functions make this possible.



High-quality powder coating

In comparison to conventional wet painting, powder coating greatly extends the service life of the machine. It is also environmentally friendly.



Selectable 100% differential lock
Good traction even on difficult ground surfaces is made possible for you by the selectable 100% differential lock.

Wheel loaders full range.



WL20e

Bucket capacity: 0.19 m³
 > Page 04



WL20

0.19 m³
 > Page 10



WL34

0.50 m³
 > Page 16



WL44

Bucket capacity: 0.80 m³
 > Page 22



WL60

1.00 m³
 > Page 28



WL110

1.80 m³
 > Page 34

Transporting material, maintaining green spaces or clearing large areas – our wheel loaders are real multitools.





The purely electrically-operated wheel loader works with low-noise operation and is 100% emission-free, this protects both the operator and the working environment

The AGM battery with on-board battery charger can be charged at any 230 V outlet. Intermediate charging are possible at any time

Easy to handle, low maintenance effort therefore low service costs

Electric, practical, innovative: the WL20e.

	WL20e
Bucket capacity (m ³)	0.19
Operating weight (kg)	2,350
Motor output (kW)	6.5' / 9"
Tipping load of bucket, loading frame horizontal – pivoted machine (kg)	1,251

* Motor drive system ** Motor work hydraulics



“On-board” battery charger – easily charge via a 230 V outlet at any time

Two electric motors, one for the drive system and one for the work hydraulics, allow for power to be accessed when needed and minimize consumption

The low noise level protects the operator and the working environment

Reduced service costs compared to the conventional diesel drive

The performance of the WL20e corresponds to the diesel-powered wheel loader WL20 and the tipping load is even higher

Flexible intermediate charging possible at any time, no memory effect

Hill-hold function – when at a standstill on a slope, the electric motor holds the machine in place

Leak-proof AGM battery technology (absorbent glass mat) makes handling the machine extremely safe

zero emission wheel loader with maintenance-free battery

Frequency converter: converts direct current of the battery into 3-phase AC for both electric motors

Main relay: relays the electrical connection between the battery and consumers

Battery: provides the necessary energy for both electric motors

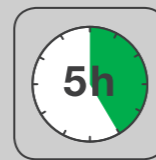
On-board battery charger: allows for flexible charging at any 230 V outlet

Control unit: controls the drive system and the work hydraulics



Wacker Neuson: Design & Innovation meets Powerful Performance.

Wacker Neuson is invested in continuous innovation in the field of electric drive and battery technology in construction machines. WL20e offers you an emission free solution that has been time tested and proven for several years in many different applications and countries.



Up to 5 hours of running time is possible with a fully charged battery depending on the application.

Easy charging via any 230 V outlet.



1. Open the rear lid and take out the charging cable.



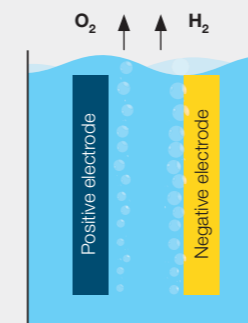
2. Insert into 230 V outlet.



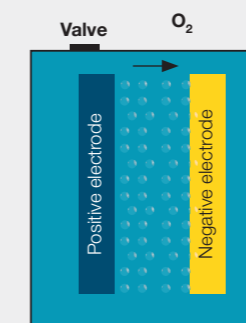
3. LED lights on the on-board battery charger indicate the current charge situation of battery.

Maintenance-free and leak-proof: AGM (Absorbent Glass Mat).

- Closed design: to prevent leakage is not possible. The battery is maintenance-free and no oxyhydrogen gas is formed
- On-board battery charger, intermediate charging available on the 230 volt outlet at any time



Open system, Lead-acid battery



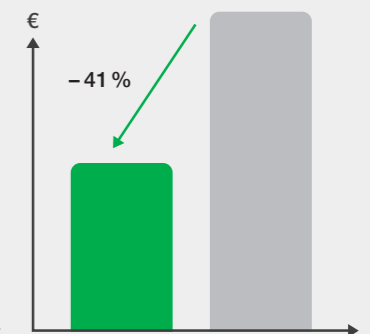
Closed system, lead-acid battery with fleece

Operating costs* for WL20e:

The 25% higher investment costs are amortized with on average machine service life over approximately 2,800 operating hours.

zero emission

Operating costs* over the machine's service life

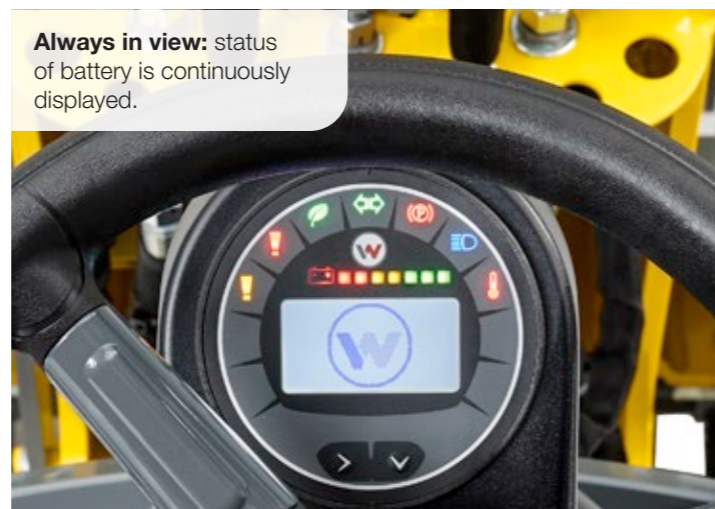


* Taken into consideration are energy and service costs as well as a battery replacement.

Hydraulically lowered/raised: the operator's canopy EPS Plus (Easy Protection System Plus).



Always in view: status of battery is continuously displayed.



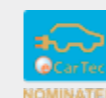
Awarded internationally:



Gold in the innovation competition of the demopark + demogolf trade fair 2015 (Eisenach, Germany)



European Rental Award 2016, short list in the category of "Rental Product of the Year" (Stockholm, Sweden)



eCarTec Awards 2015, finalist in the category "Electric Vehicles" (Munich, Germany)



Plantworx Award 2017, Awarded "Highly Recommended" in the category "Environmental Innovation" (Leicester, UK)



Innovation award "Innovation Compact Equipment" DLR Convention 2018 (Bordeaux, France)



The right operator's cab for every application area: operator's canopy, EPS (fold-down operator's canopy), EPS Plus (lowerable operator's canopy) or cabin

Compact dimensions and low weight allow for transport on a car trailer

Designed to work in confined and narrow spaces

Compact powerhouses: the wheel loaders WL20.

	WL20
Bucket capacity (m ³)	0.19
Operating weight (kg)	2,000–2,150
Motor output (kW)	18.4 / 23.4
Tipping load of bucket, loading frame horizontal – pivoted machine (kg)	977 / 1,206*

* Values of optional builds

Compact dimensions in width, height and length, ideal for confined spaces

Selectable operator's cab: operator's canopy, EPS (fold-down operator's canopy), EPS Plus (lowerable operator's canopy) or cabin

Good maneuvering thanks to the small turning radius

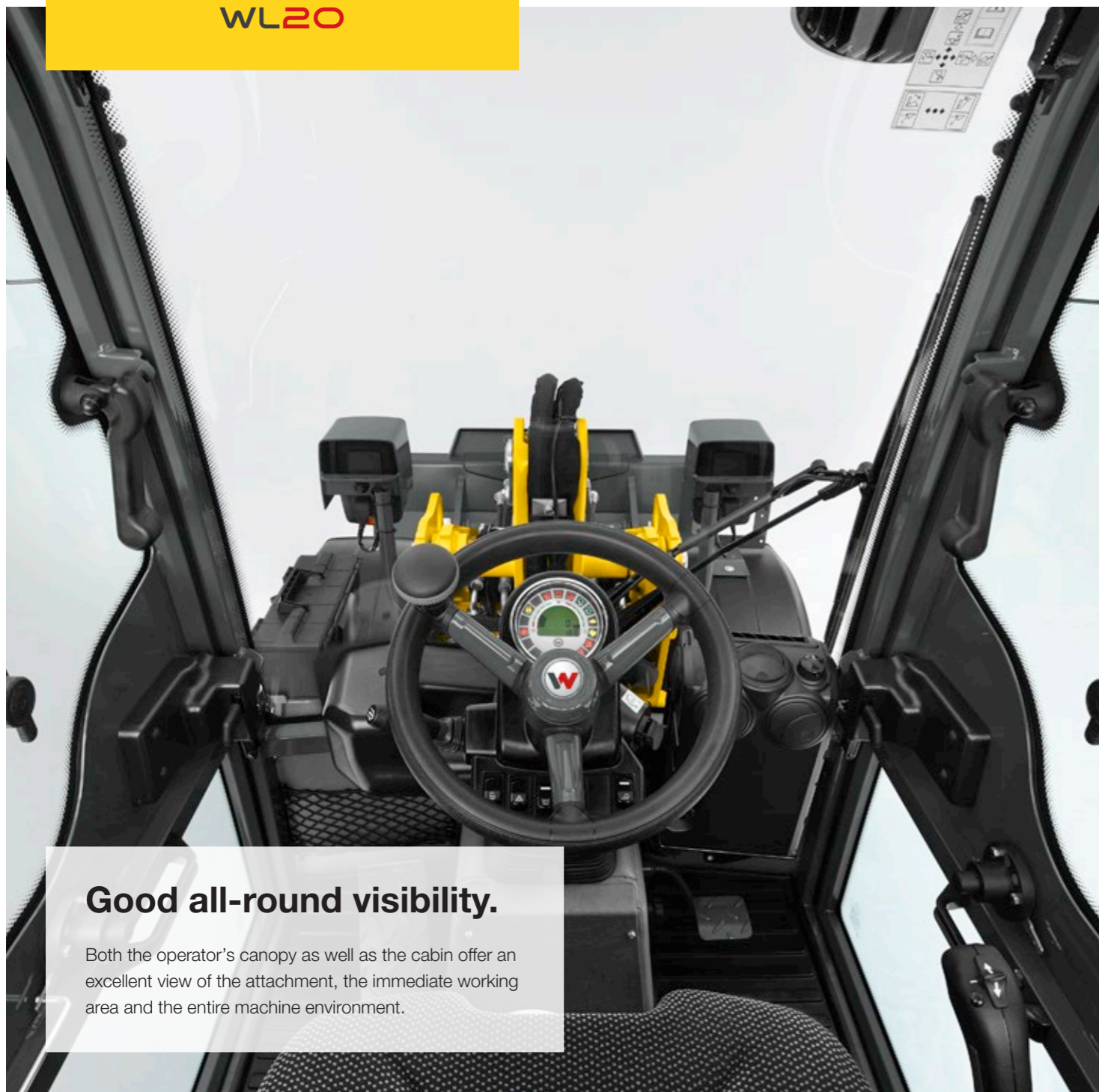
Flexible and universal in application due to the optimally tailored kinematics and optimised weight distribution

Speed option up to 30 km/h for increased transit time

Infinitely adjustable mudguards make it possible to suit varying tyre types

Easy transport on a car trailer thanks to the low weight





Good all-round visibility.

Both the operator's canopy as well as the cabin offer an excellent view of the attachment, the immediate working area and the entire machine environment.

Optimal service accessibility.

All three wheel loaders are built with a tiltable operator's stand or a tiltable cabin. This allows easy access to the engine, hydraulic system, and electronics. This facilitates easy inspection and maintenance of the machine. Wide opening engine hood allows for optimal access.

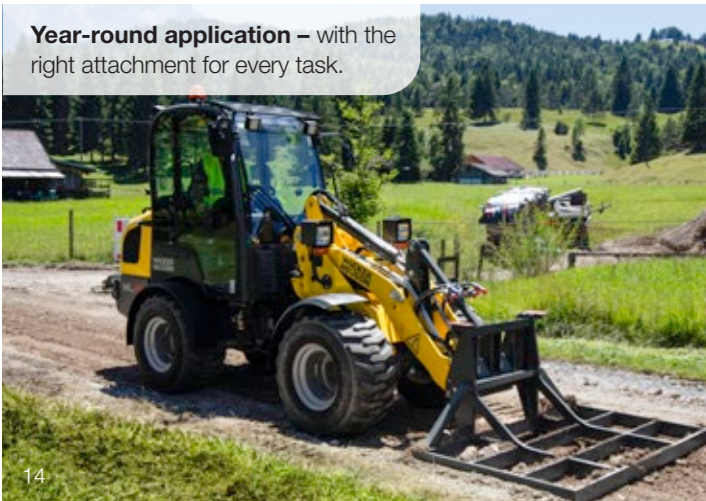


Folds down quickly: the operator's canopy EPS (Easy Protection System).



Whether driving into a garage or building entrance: low passage heights are not an obstacle.

Year-round application – with the right attachment for every task.



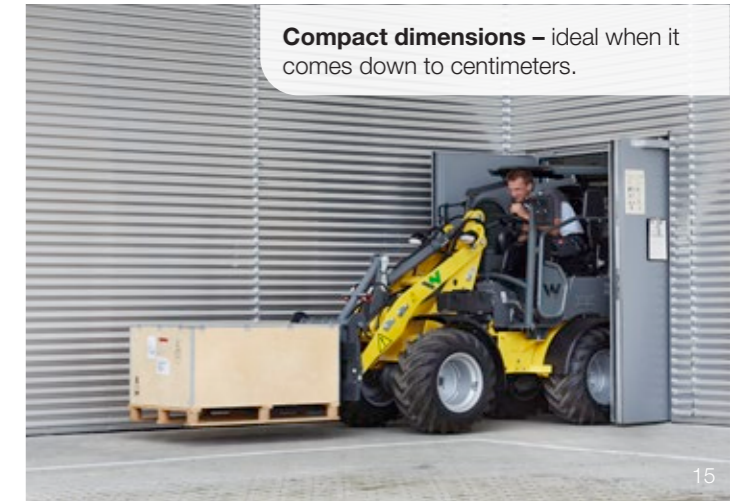
Designed to move heavy loads
eg. moves a load of paving stones easily



Transports quickly and cost effectively: thanks to the compact dimensions and low weight, the machines can be transported easily by car trailer.



Compact dimensions – ideal when it comes down to centimeters.





Powerful hydraulics with many options (e.g. Highflow) for a wide range of attachments and applications

Despite the compact dimensions: powerful lift and ripping forces with a powerful and well-matched motor output

Comfortably equipped cabin with optimal ergonomics and a clear overview

Multi-talent with comfort: the wheel loader WL34.

	WL34
Bucket capacity (m ³)	0.50
Operating weight (kg)	3,900
Motor output (kW)	45/55.4*
Tipping load of bucket, loading frame horizontal – pivoted machine (kg)	2,443/2,539*

* Values of optional build



Comfortable cabin
for fatigue-free work

Operator's canopy (low/high) also
allows for low passages and thus a
large range of applications

Powerful hydraulics
with many options,
such as high flow

Impressive performance dynamics –
for the WL44, different motor outputs can
be selected depending on the application

Selectable operator stations (varies by model,
see p. 47): operator's canopy (low/high), 2-door
cabin, 1-door comfort cabin

Easy service access
for fast and efficient
maintenance

The optional air-conditioning system
provides a pleasant working environment,
even in warm temperatures

Large selection of tires for
the most diverse applications

Numerous attachments
for versatile application



Specialized area: all-rounder

Our wheel loader WL34 will never let you down, no matter what you have in mind. Our all-rounders become true specialists in every field thanks to the powerful hydraulics and a huge selection of attachments.

Comfortably equipped cabin.

Comfort and a high degree of ergonomics in the cabin allow the operator to work for hours fatigue-free and productively. For example, the spacious cabins are ideally damped against vibrations and the comfort seat is additionally cushioned. The

steering wheel, seat and operator's controls can be individually adapted to the operator's size. The machine and additional functions are controlled via a joystick in the latest generation. Therefore the operator always has everything at hand.



Comfortable work: adjustable steering wheel and cushioned comfort seat (optional).

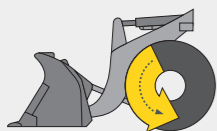


Operator-friendly and multifunctional: the innovative joystick with ergonomically arranged, illuminated touch controls.

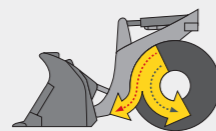


Adjustable joystick console on the operator's platform that moves when adjusting the seat.

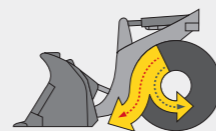
Inch brake pedal: motor output where it is needed.



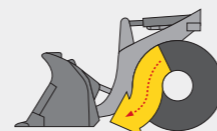
No pressure on inch brake pedal: full power for the drive system



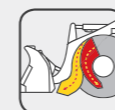
Slightly depressed brake-inch pedal: speed is reduced, more power to the work hydraulics.



Further depressed brake-inch pedal: the speed is reduced further, even more power to the work hydraulics.



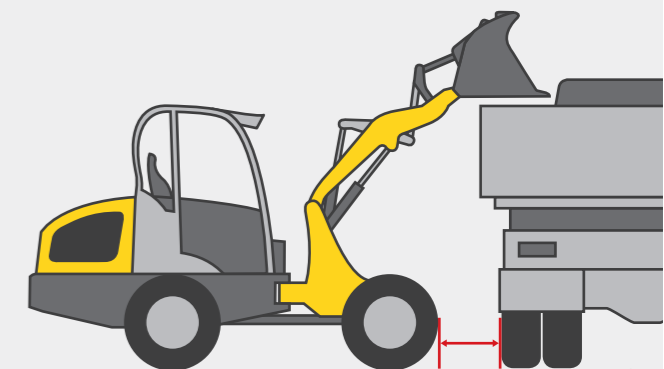
Fully depressed brake-inch pedal: the wheel loader stands still, full power to the work hydraulics.



Full power for the hydraulics and at the same time reducing the travel speed:

The advantages are obvious: less wear of the service brake and optimal power distribution of the motor output. Stalling of the engine is not possible.

Effortless loading, even with high sides, thanks to the load arm with a large lift height and reach.





Sturdy and cost-efficient: ideal entry-level models without making compromising when it comes to power and performance

Large selection of operator's stations: different operator's canopies and (comfort) cabin

Many individual options can be selected when configuring

Time-tested and proven all-rounder: the wheel loader WL44.

	WL44
Bucket capacity (m³)	0.80
Operating weight (kg)	4,600
Motor output (kW)	35.7 / 55.4*
Tipping load of bucket, loading frame horizontal – pivoted machine (kg)	2,736 / 2,845*

* Values of optional build



Selectable operator stations (varies by model, see p. 47): operator's canopy (low/high), 2-door cabin, 1-door comfort cabin

Easy service access for fast and efficient maintenance

Comfortable cabin for fatigue-free work

Operator's canopy (low/high) also allows for low passages and thus a large range of applications

Powerful hydraulics with many options, such as high flow

Impressive performance dynamics – for the WL44, different motor outputs can be selected depending on the application

The optional air-conditioning system provides a pleasant working environment, even in warm temperatures

Large selection of tires for the most diverse applications

Numerous attachments for versatile application



Everything required for productive work.

You don't have to do without anything, even with our entry-level models – especially not when it comes to performance. The sturdy and sophisticated technology of our wheel loaders has been time-tested and proven in many applications. This makes them particularly reliable performance machines on any construction site – a cost-benefit calculation that works.

Two lift cylinders.

For even more stability of the loader system, all wheel loaders from Wacker Neuson are equipped with two lift cylinders. Therefore the hydraulic power is optimally distributed to the load arm.



Z-kinematics.

The WL44 is built with Z-kinematics. This makes higher break out forces possible in the tipping movement – for powerful working and sufficient power reserves in any situation.



Comfort cabin.

The 1-door comfort cabin is spring-mounted at four points. As a result, impacts are optimally absorbed. From the entry on the left to the fully glazed vent window on the right, the cabin offers an excellent view of the attachment and the entire working area.



Ergonomics.

The seat and armrests can be individually adjusted. This way even large operators find the optimal operating position so they can work fatigue-free for longer periods of time.



Uncomplicated maintenance.

The removable seat, the wide-opening engine hood as well as various maintenance covers make all service access easy to reach. This saves time and money in maintenance.





Powerful machines for heavy materials handling.

A high optioning level of the machine offers comfort for productive and ergonomic working

The most powerful high flow hydraulics in the 6 to 7-tonne class

Strong partner: the wheel loaders WL60.

	WL60
Bucket capacity (m³)	1.00
Operating weight (kg)	5,930
Motor output (kW)	75
Tipping load of bucket, loading frame horizontal – pivoted machine (kg)	3,031

Sturdy load arm design
with the largest lift height in its
performance range

Load-sensing performance hydraulics
with 150 l/min flow for more operating
comfort and less fuel consumption

Optional flow-sharing increases
productivity and allows for the
simultaneous operation of several
functions

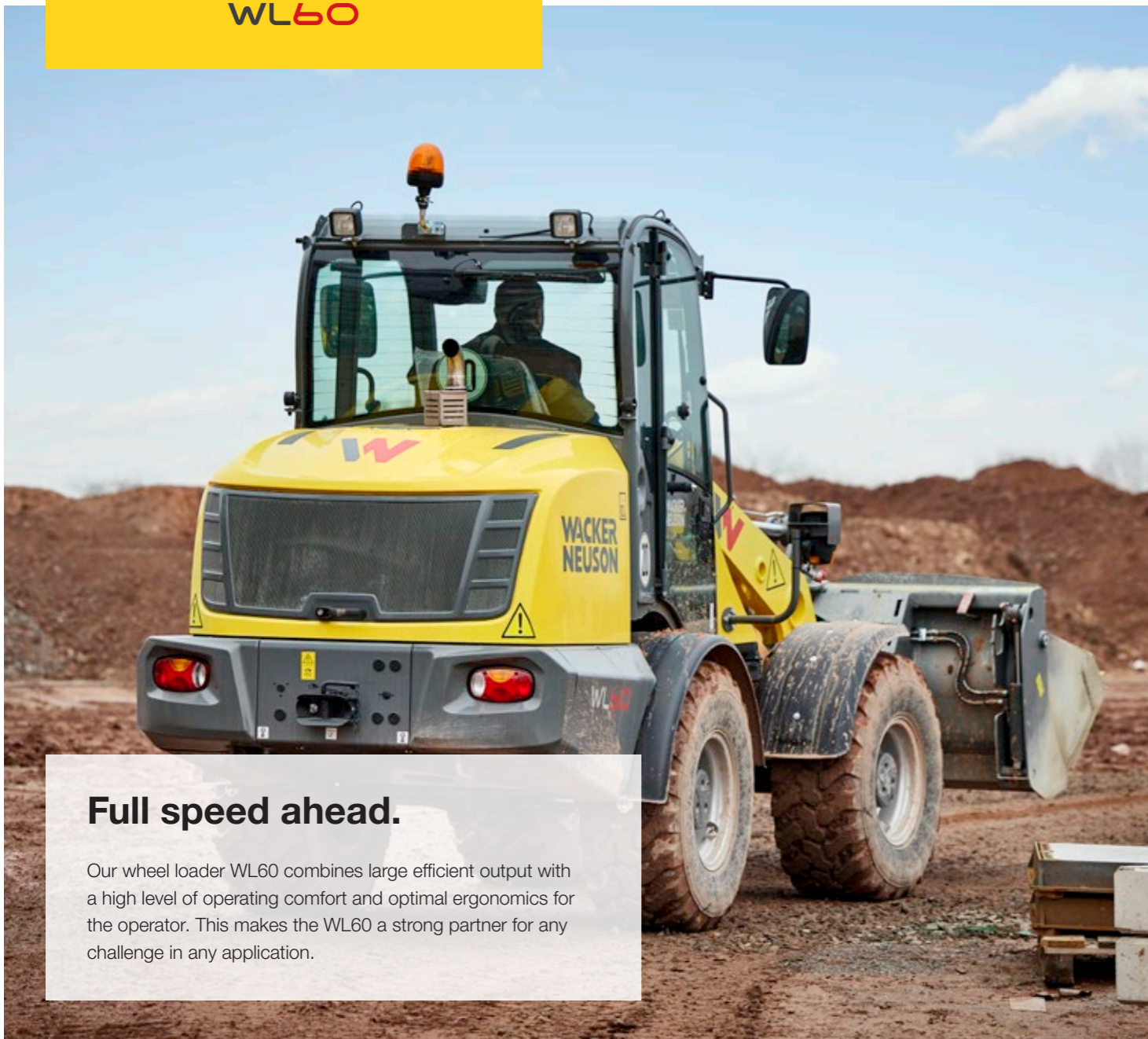
Quick, favorably priced maintenance
due to the tiltable cabin

Jog dial: easy control of the oil volume
for sensitive attachment control

**Automatic speed-dependent lifting
arm damping** for comfortable road travel

Various rear hydraulic options
for additional rear attachments

Trailer operation with up to 8-tonne trailer load
possible with different approvals (attention: observe
country provisions)



Full speed ahead.

Our wheel loader WL60 combines large efficient output with a high level of operating comfort and optimal ergonomics for the operator. This makes the WL60 a strong partner for any challenge in any application.

Joystick and jog dial.

Perfect control of machine and functions via a joystick in the latest generation. The innovative joystick with ergonomically-arranged, illuminated touch controls creates operator friendliness and multifunctionality.

If necessary, the flow rate of the hydraulic oil can be manually set using the "jog dial" control element. This is advantageous if the machine drives a hydraulic attachment, which does not require the full hydraulic performance of the machine. The operator can thus work with the machine and attachment very sensitively and in a resource-conserving way.



Ventilation as required.

The cabs feature large, wide-opening doors on both sides. The upper window can swing open completely and be locked. A gap ventilation is also possible.



Comfortable working environment.

The working environment is excellent, thanks to an efficiently working heating and ventilation system with a fan, fresh air filter and well-placed air nozzles. In warm temperatures, an air-conditioning system is recommended.

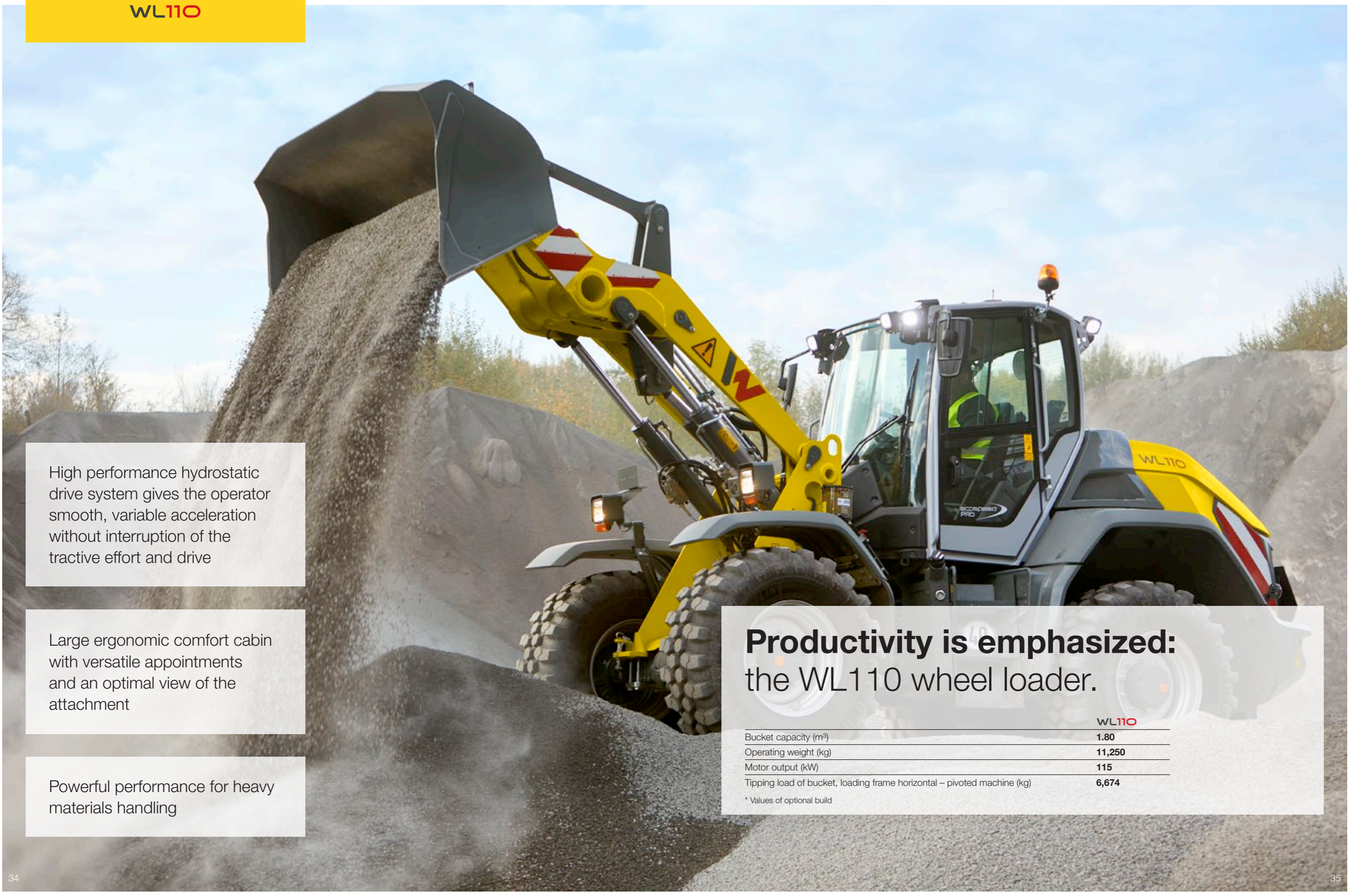


High level of stability – thanks to the optimal weight distribution.

Easy entry.

With a few steps, you can get into the machine's cabin comfortably. The large designed and slip-proof entry steps make this possible.





High performance hydrostatic drive system gives the operator smooth, variable acceleration without interruption of the tractive effort and drive

Large ergonomic comfort cabin with versatile appointments and an optimal view of the attachment

Powerful performance for heavy materials handling

Productivity is emphasized:
the WL110 wheel loader.

	WL110
Bucket capacity (m ³)	1.80
Operating weight (kg)	11,250
Motor output (kW)	115
Tipping load of bucket, loading frame horizontal – pivoted machine (kg)	6,674

* Values of optional build

Extensive standard equipment
such as a large LCD display, rear-view camera, automatic air conditioning

Optimal service accesses
thanks to the wide-opening engine hood and removable mudguards

Powerful load-sensing hydraulics
with 150 l/min (optional 180 l/min) for faster work cycles

The power output sets new standards for tipping load, thrusting force and lifting power

Individual configuration of the engine, drive, operator's cab and hydraulics



Trailer operation up to 18 tonnes
for all common coupling systems

High performance tyres
allow for optimal performance and traction on most surfaces

Automatic bucket return saves the tool position at the touch of a push button and recalls it again during any new loading process – for maximum precision and speed, for example when stacking or filling



Your machine always within view: With EquipCare.



With our Telematics solution, EquipCare, you give your machines a voice. Machines equipped with the Telematics module actively report in, for example to inform you of upcoming maintenance or possible malfunctions. For these machines, our EquipCare Dual ID is also available as an option. This is an electronic access control. You can set exactly who can use your machines, and thus increase security on your construction site.



Great all-round visibility and an ergonomic working area.

Plenty of legroom, clearly arranged switches, comfortable operator's seat and optimal view of the attachment. A working area that motivates and fully supports the operator. The console with the multifunctional joystick "jog dial," electronic manual throttle and inching were of course realized to be co-sprung with the seat to allow for comfortable driving and working.



Everything in view with the digital 7" display: in addition to standard displays such as temperature, tank filling, or operating hours, active functions, such as electrical functions, the continuous operation of the 3rd control circuit or the activated differential lock.



Hydraulic oil volume adjustment easily via "jog dial:" if an attachment does not require the full hydraulic performance, the flow volume can be reduced manually. Therefore the operator can work sensitively with the machine and attachment while saving resources.



Optimal service accesses: the WL110 offers easy-to-access maintenance flaps and the mudguards can be removed. This allows easy access to the engine, hydraulic system, and electronics. This greatly facilitates the inspection and maintenance of the machine. The engine hood can be opened widely, thereby allowing for optimal access.



Rear articulated joint and oscillating axle: tight curves, small slopes – every construction site is different. In order to bring the transported material safely to the destination, the WL110 is equipped with an articulated joint and an oscillating axle in the rear. This ensures the optimum maneuverability and traction in any situation. At 40°, the steering angle is generous, the turning circle over tires is 4.90 m and the inner radius is 2.45 m.



Trailer operation up to 18 tons: WL110 has a self-rescue coupling as standard. In addition, the following coupling possibilities are available: automatic ball hitch, K50 ball hitch (car trailer), Auto hitch, Piton Fix as well as CUNA D3. To safely move trailer loads, there is both a two-line pneumatic brake as well as a hydraulic trailer brake.

Attachments.



The right attachment for every machine.

The tasks for wheel loaders are varied and so the attachments from Wacker Neuson are also varied. With our comprehensive and sophisticated product range, you will make a multifunctional machine out of any model. And through the hydraulic quickhitch system, the attachments can easily be replaced from your seat.

The exact specifications and availabilities of attachments differ depending on the model and country. Your Wacker Neuson partner is happy to help you.

Product range for wheel loaders (selection).



Effective green maintenance:
flail mower with collection tray.



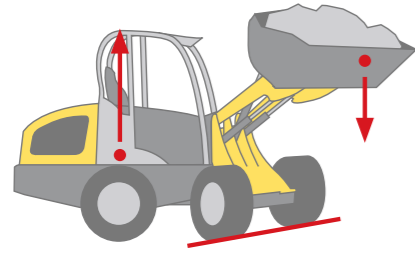
Reliable, even for heavy loads:
the width-adjustable pallet fork.



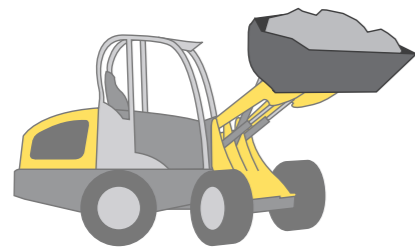
Attachments are changed directly from the operator's seat.



Tipping load briefly explained.



The tipping load provides the maximum load weight of a machine, including attachment. If the value is reached, the rear wheels will lose contact with the ground.



Wacker Neuson measures the tipping load as per the standard ISO 14397 - EN474-3. The following values are specified here:

- Tipping load with bucket – loading frame, machine straight
- Tipping load of bucket – loading frame, machine pivoted
- Tipping load with pallet fork – loading frame, machine straight
- Tipping load with pallet fork – loading frame, machine pivoted

Attention: the tipping load changes due to the machine's configuration (e.g. rear weight, cabin or operator's canopy, etc.) and due to different attachments (e.g. buckets with different dead weight).



The maximum possible bucket capacity is determined via the tipping load and the payload:

$$\text{Payload} = \frac{\text{Tipping load pivoted}}{2}$$

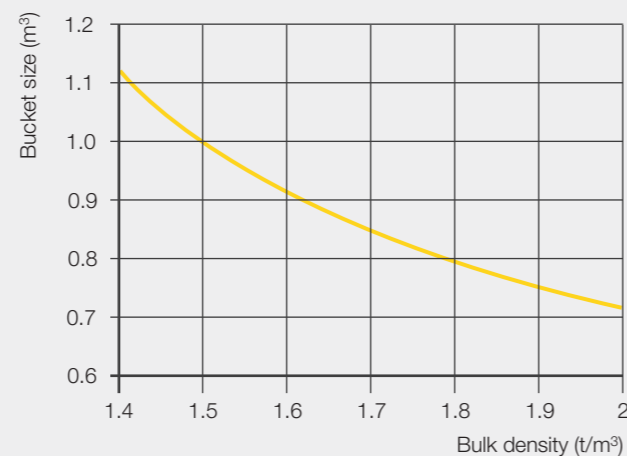
$$\text{Bucket capacity} = \frac{\text{Payload (t)}}{\text{spec. material weight (t/m}^3\text{)}}$$

Bulk material and bucket selection.

Every bulk material has a different density and thus a different weight with the same quantity. The following tables provide you with an overview of the different bulk material and the corresponding bucket selection.

BULK MATERIAL	BULK DENSITY t/m ³
Moist soil	2.10
Dry soil	1.50
Lime	1.60
Mortar	2.20
Dry sand	1.65
Moist sand	2.00
Dry gravel	2.00
Moist gravel	2.00
Waste paper	1.10
Household trash	0.70
Loose snow	0.13
Moist snow	0.65
Logs	0.80
Wood chips	0.35
Wood pellets	0.65
Granite	1.80
Sandstone	2.40
Slate	2.20
Bauxite	1.40
Broken plaster	1.80
Coke	0.50
Broken glass waste	1.40
Whole glass waste	1.00
Compost	1.00
Bulky waste	1.00

Bucket selection table



Tyre treads.

The right wheel loader tires play an important role in specific applications. Everything runs perfectly if the tires are optimally matched to the ground surface and application area. Seven treads are available for you to choose from.

The exact specifications and availabilities of tires differ depending on the model and country. Your Wacker Neuson partner is happy to help you.

RP tread (grass)

- Gentle driving on the ground due to the large contact surface
- For use on lawns and green areas

AS tread (tractor)

- Tapered lamellas
- For smeary and very dirty surfaces
- For earthworks, green areas (and loamy ground)

EM tread (earth moving)

- Parallel-running lamellas
- Large contact surface and therefore good thrusting force transmission and high running smoothness on the street
- For earthworks, sand, gravel, crushed stone, asphalt



MPT tread (industry)

- Very broad application spectrum
- Good traction in uneven ground conditions
- Allows for quick road crossings
- For asphalt, gravel, crushed stone, industry

Multi-use tread

- For varied year-round use and various climate conditions
- Good traction on loose surfaces in the summer
- Good stability on snow and slippery driving surfaces during the winter
- For ice/snow, asphalt, industry, municipalities

SureTrax

- Large contact area
- High lift capacity
- Ideal for firm and other hard surfaces
- For asphalt, paving stones, hard and firm ground

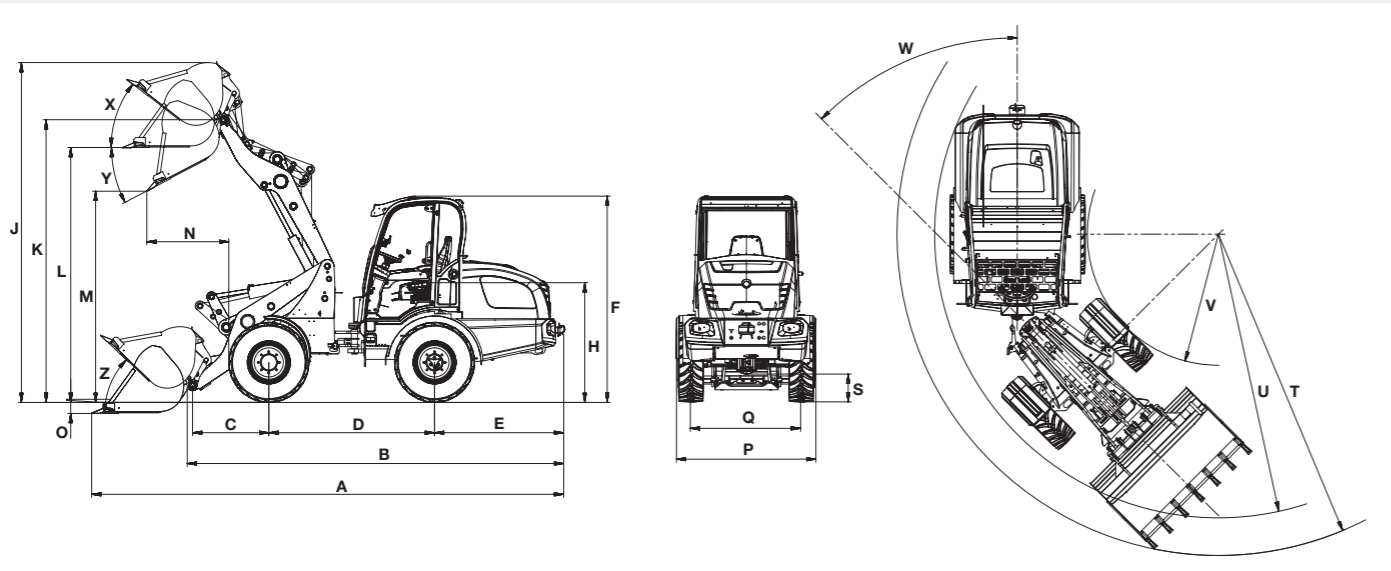
Bibload

- High level of running smoothness and long service life due to the large contact surface with the ground
- Good traction due to the offset tread blocks
- High level of wear resistance
- For asphalt, industry and firm ground conditions

Dimensions

		WL20e	WL20	WL34	WL44	WL60	WL110
DIMENSIONS	UNIT						
Standard tires	-	27x10.5-15 EM ET-5	27x10.5-15 EM ET-5	12.0/75-18 MPT ET-30	12.5-18 MPT ET-50	405/70-18 EM ET0	500 / 70 R24 Michelin BIBLOAD ET 40
Standard bucket		Digging bucket 1,150 mm, 0.2 m ³	Digging bucket 1,150 mm, 0.2 m ³	Digging bucket 1,600 mm, 0.6 m ³	Digging bucket 1,900 mm, 0.80 m ³	Digging bucket 1,900 mm, 1.0 m ³	Digging bucket 2,500 mm, 1.80 m ³
A Overall length	mm	3,721	3,721	5,010	5,420	5,898	6,500
B Total length without bucket	mm	3,063	3,063	4,260	4,760	4,780	5,610
C Center of axle up to the bucket pivot point	mm	508	508	675	1,040	991	1,200
D Wheel base	mm	1,468	1,468	2,045	2,110	2,150	2,660
E Rear overhang	mm	975	975	1,430	1,530	1,676	1,520
F Height (min./max.)	mm	1,948–2,361	1,880–2,302*	2,220/2,420*	2,332/ 2,470/ 2,528*	2,693	3,060
H Seat height	mm	1,245	1,225	1,270	1,470	1,609	1,940
J Total working height	mm	3,294	3,274	3,930	3,890	4,409	4,780
K Max. height of the bucket pivot point	mm	2,713	2,693	3,270	3,200	3,686	3,820
L Load-over height	mm	2,444	2,424	2,970	2,940	3,375	3,550
M Dumping height	mm	2,031	2,011	2,460	2,430	2,841	2,860
N Reach with M	mm	330	350	344	665	799	950
O Scraping depth	mm	94	94	43	136	74	136
P Overall width	mm	1,076	1,076	1,550	1,830	1,829	2,390
Q Track width	mm	810	810	1,260	1,500	1,422	1,820
S Ground clearance	mm	207	207	320	367	375	500
T Max. radius outside	mm	2,681	2,681	3,610	4,270	4,072	5,370
U Radius on the outer edge	mm	2,356	2,356	3,350	3,870	3,686	4,900
V Inside radius	mm	1,219	1,219	1,680	1,990	1,666	2,450
W Articulation angle	Degrees	45	45	45	40	45	40
X Rollback angle at max. lift height	Degrees	50	50	49	71	33	56
Y Max. angle for bucket emptying	Degrees	38	38	43	45	33	45
Z Rollback angle on the ground	Degrees	48	48	43	43	39	45

* Depending on operator's cab (cabin, cabin low / high, operator's canopy fixed, operator's canopy low / high, operator's canopy fold-down, operator's canopy hydraulically lowerable)



Technical data

		WL20e	WL20	WL34	WL44	WL60	WL110
ENGINE		UNIT					
Manufacturer	–	–	Perkins	Deutz	Perkins (Deutz)	Perkins	Deutz
Max. motor output (optional)	kW	–	18.4 (23.4)	45 (55.4)	35,7 (55,4)	75 (90)	115
Max. motor output (optional)	HP	–	25 (32)	61 (75)	50 (75)	102 (122)	156
At max. rpm (optional)	rpm	–	2,800 (2,600)	2,300	2,600 (2,300)	2,200	2,300
Displacement (optional)	cm³	–	1,131 (1,496)	2,900	2,216 (2,900)	3,400	4,038
WEIGHTS		UNIT					
Operating weight FSD/cabin	kg	2,350	2,000/2,150*	3,900	4,600	5,930	11,250
Break out force (according to ISO 14397-2)	daN	2,170	1,280	4,427	5,620	4,034	6,036
Bucket capacity	m³	0.2	0.2	0.6	0.85	1.0	1.8
Bucket tipping loads (according to ISO 14397 - EN474-3) Horizontal loading frame – Machine straight	kg	1,509	1,215/1,437*	2,925/3,055*	3,200/3,327*	3,674	7,739
Bucket tipping load (according to ISO 14397 - EN474-3) Horizontal loading frame – Machine pivoted	kg	1,251	977/1,206*	2,443/2,539*	2,736/2,845*	3,031	6,674
Pallet fork tipping load (according to ISO 14397 - EN474-3) Horizontal loading frame—Machine straight	kg	1,112	904/970*	2,615/2,716*	2,478/2,562*	3,344	6,851
Pallet fork tipping load (according to ISO 14397 - EN474-3) Horizontal loading frame—Machine pivoted	kg	916	719/866*	2,200/2,276*	2,126/2,204*	2,791	5,946
Operator's cab (optional)	–	FSD (EPS Plus, EPS, cabin)	FSD (EPS Plus, EPS, cabin)	FSD (cabin)	FSD (cabin)	Cab	Cab
Travel speed (optional)	km/h	0–15	0–20 (30)	0–20 (28)	0–20 (30)	0–20 (30/40)	0–20 (40)
Fuel tank capacity	l	–	20	55	82	105	140
Hydraulic oil tank capacity	l	18.5	20	65	66	95	125
HYDRAULIC SYSTEM		UNIT					
Drive hydraulics working pressure (optional)	bar	–	330 (450)	450	450	445	480
Work hydraulics discharge volume (optional)	l/min	32	30.8 (36.4)	57.5 (73.6)	58.5 (64–115)	100 (115/150)	180
Work hydraulics working pressure	bar	225	225	210	220	210	250
DRIVE SYSTEM		UNIT					
Drive type/drive system	–	Electrically via universal joint shaft	Hydrostatic via universal joint shaft	Hydrostatic via universal joint shaft	Hydrostatic via universal joint shaft	Hydrostatic via universal joint shaft	Hydrostatic via universal joint shaft
NOISE CHARACTERISTIC VALUES		UNIT					
Average sound power level LwA	dB (A)	91.8	98.4	99.5	100.2	101	100.7
Guaranteed sound power level LwA	dB (A)	92	101	101	101	103	102
Specified sound pressure level LpA	dB (A)	76	84	75	78	78	70

* Values with cabin and optional outfitting ** Values with optional Deutz engine

		WL20e	WL20e
		Standard battery	Optional battery
		UNIT	
Battery voltage	V	48	48
Rated capacity	Ah	240	310
Battery weight (±5%)	kg	450	579
Charging time	h	6	8
Running time under hard long-time application with heavy materials handling, uninterrupted operation	h	1.5*	2.1*
Running time under normal activities , uninterrupted operation	h	2–3.5*	2.8–4.5*
Running time under normal activities with interruptions (30 min. driving, 30 min. standstill)	h	up to 4*	up to 5*
Motor drive system	kW	6.5	6.5
Motor work hydraulics	kW	9	9

The running times of the battery are strongly dependent on the respective application conditions, the task and the driving style. This may also mean that a longer running time can be achieved. The specified running times may also be underrun of in extreme cases. An interrupted operation (e.g. 30 min. driving, 30 min. standstill) prolongs the running time of the battery.

The Wacker Neuson product range includes over 300 different product series with different variants. The product data may vary accordingly with the selection of different options. Not all Wacker Neuson products listed or shown here are however available or allowed in all countries. The Wacker Neuson products shown are examples and as such are subject to changes. We are happy to make you a specific offer upon request!

Reproduction only with the written approval of Wacker Neuson.

© Wacker Neuson SE

Your everyday work day is full of challenges. We have the right solutions and help you to stay ahead of the competition. We offer you everything you need for your construction requirements: **Wacker Neuson – all it takes!**

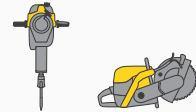
Products



Concrete technology



Compaction



Demolition technology



Excavators



Wheel loaders



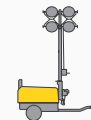
Telehandlers



Dumpers



Generators



Lighting



Pumps



Used equipment

www.wackerneuson.com

Services



Financial solutions
Uncomplicated, transparent and individual financing options for you.



Repair & maintenance
Excellent and fast maintenance. Repairs with original spare parts.



Academy
We expand your know-how: practice-oriented and within an ideal learning environment.



EquipCare
Everything about the machines at a glance, via app or PC – EquipCare.



Concrete specialists
Our specialists advise you in all project stages.



Spare parts

Every minute counts:
Within the shortest period of time, we deliver over 150,000 genuine Wacker Neuson spare parts to your construction site.

